

WEEK 3 TERM 1 2019

Kia ora koutou Tinui whānau and friends!

Wow! The year is flashing past! What a great afternoon we had last Friday. All but two of our school families were able to come and hang out, have a swim, scoff a sausage and chat. The friendly buzz that we experienced was fantastic and it was great seeing the pool and it's surrounds full of kids, mums, dads, and grandparents. Thanks to the PFC for supplying the sausages. The PFC are an integral part of our school community and are always looking for new faces to join in the fundraising activities. If you want to help out with PFC activities join the Facebook Messenger chat group to stay abreast of what is happening or contact Emily Wellbrock (PFC President) on 06 372 6635

Thanks to all of you who have donated towards Annie McLennan's leaving gift. We will be taking donations until the 1st March at the school office.

We are off to Wings over Wairarapa tomorrow and will be leaving school as close to 9am as possible and returning in time for the buses to run as normal. Please make sure your child has their Tinui School red t-shirt a drink and plenty of food. We will make sure they have their hat and sunscreen on.

It is another busy week next week with the Room 4 Ka Rewa whānau morning and shared morning tea on Monday and the Rural Schools Swimming on Thursday. Please re read the notice sent home last week and we will also post reminders on facebook.

Have an awesome weekend!

If you need to contact me please do so at school or on principal@tinui.school.nz

Nga mihi
Richard Lennox



Whānau Afternoon Pics



WEEK 3 TERM 1 2019

Important Dates

22/2 Wings over Wairarapa
25/2 Ka Rewa whanau engagement morning
28/2 Rural Schools Swimming Sports
1/3 Ki O Rahi at Riversdale Beach
6/3 Masterton Cluster Swimming Sports
12/3 Ka Rewa
20/3 Wairarapa Primary Swimming Champs
22/3 Puppet Show/Years 7/8 Tech
25/3 BOT Meeting
26/3 Ka Rewa
29/3 Years 7&8 Tech
5/4 Years 7&8 Tech
9/4 Ka Rewa
12/4 End of Term 1
25/4 ANZAC Day
29/4 Term 2 Starts

SUN HATS

All students have been issued with a school sun hat. The school sun hat must be worn when outside playing and during PE lessons. No hat and students have to sit in the shade. Please make sure your child takes their hat back to school if they have bought it home in their bag. Caps are not adequate sun protection as they provide no protection for the ears and back of the neck.

FRIDAY LUNCH ORDER MENU

Tinui Village Pantry

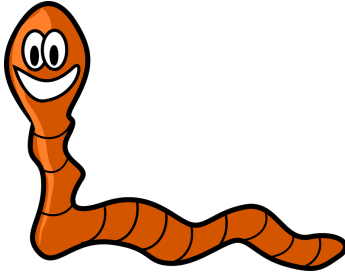
renee@tinui-village-pantry.co.nz or 021 146 5700

Hot Chips	\$2.00
Small Mince Savoury	\$2.00
Hotdog	\$3.00
American Hotdog	\$3.00
Mince & Cheese Pie	\$3.00
Homemade Sausage Roll	\$3.50
Sandwich	
Toasted/Fresh (2 fillings)	\$4.00
Fresh Fruit	\$1.00
Hot Chocolate	\$3.50
Flavoured Milk	\$3.00
Fruit Juice	\$3.00
Juicies (real fruit ice block)	\$2.00

CHECK OUT THE SCHOOL WEBSITE

[http://www.tinui.
school.nz/](http://www.tinui.school.nz/)

Worm Wine Fertilizer \$2 Per bottle
available from the Office.



**Download the School App from
the [App Store](#) or [Google Play](#)**

We will be sending notices and alerts through
the app soon.

You will be able to access the school
calendar, report absences and sign permission
slips.

Make sure you enable push notifications so you
don't miss a thing.

PLEASE REVIEW OUR POLICIES

Go to our school docs site

www.schooldocs.co.nz

Search for Tinui School and use

Username : tinui

Password : respect

Look for the red POLICY UNDER REVIEW
tab. Policies under review are "Swimming
Pool" and "Alcohol, Drugs and other Harmful
Substances"

Copies are attached to this newsletter.

Please feel free make comments on any of
the policies under review. We need your
input.

Educational words of Wisdom

"Learn to embrace challenges rather
than avoid them. Choose to see
challenges as fun opportunities to
learn. Even if you can't overcome the
challenge, you would have still grown
as a person."



Have you thought about becoming a board member for your school?

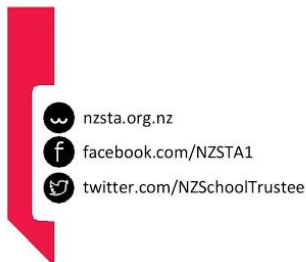
Come along to NZSTA's Kōrari Programme to find out about becoming a school trustee on a school board!

We are holding a community hui at Kuranui College on 2 April 2019 at 6.00 pm in the lead up to this year's board of trustees' elections.

At the hui you'll hear about:

- What is a school board of trustees
- What do trustees do
- What skills do trustees need
- Who can become a trustee
- How do I become a trustee
- Who is on a board of trustees
- How is a board elected
- What help do school trustees get
- How does the board of trustees work

We look forward to seeing you and helping your school's succession planning!



Kōrari – a programme that provides you with governance training to help you understand the role of school boards of trustees